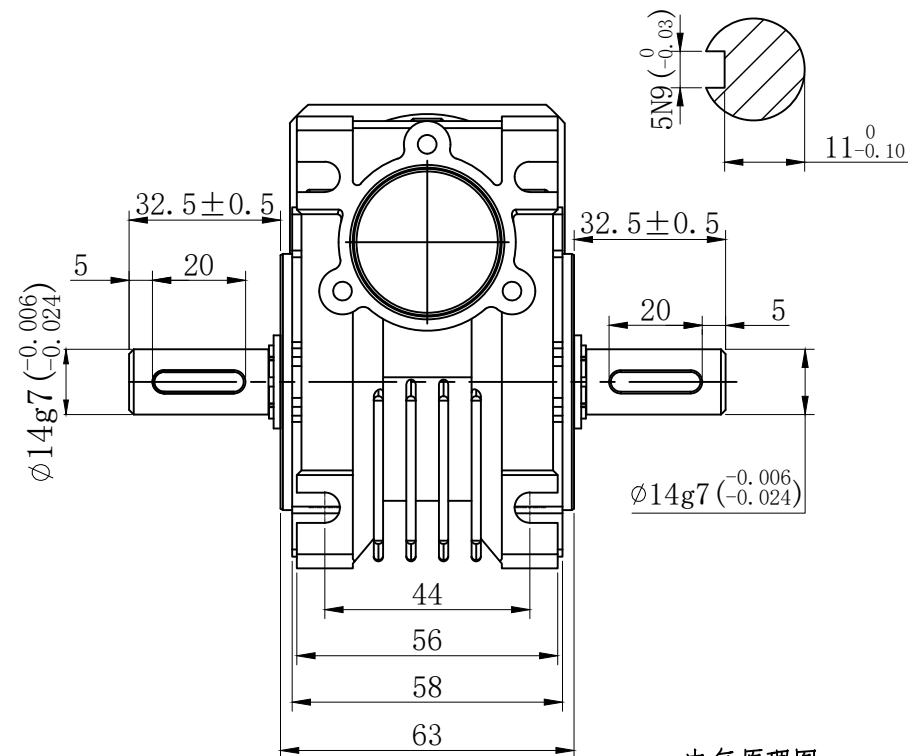
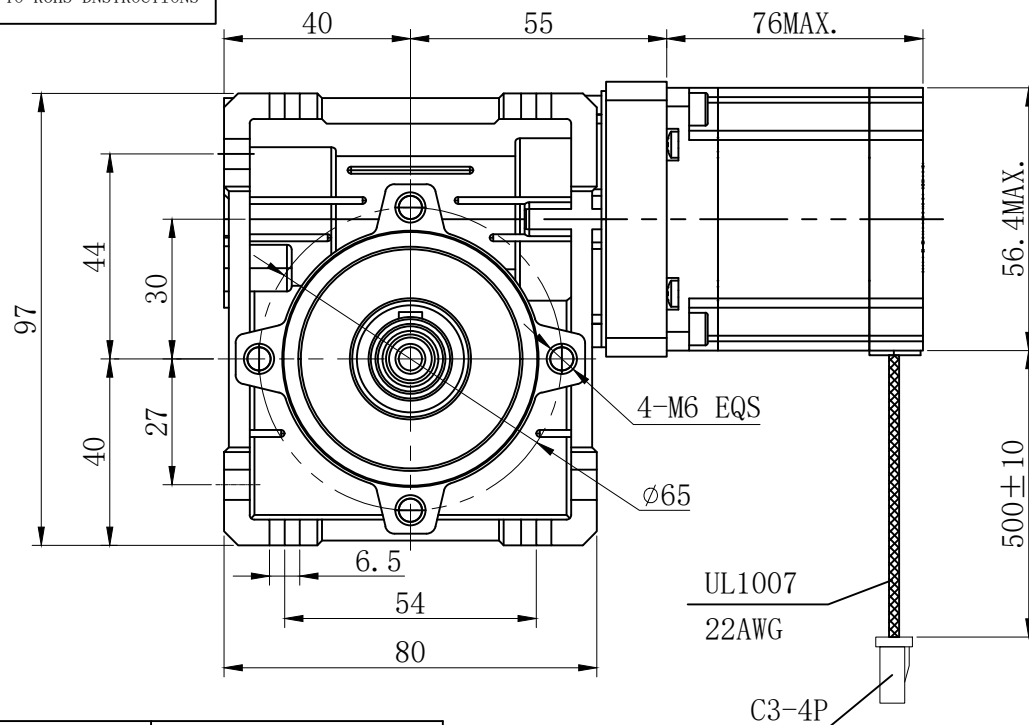
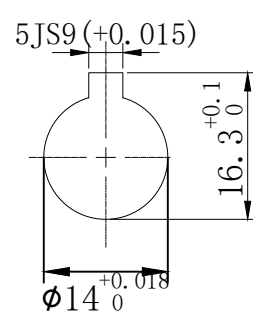


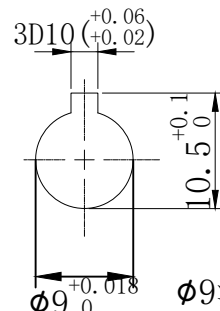
符合RoHS指令要求
CONFORM TO RoHS DNSTRUCTIONS



特性 character	规格 specifications
1. 相数 Number of phase	2
2. 步 距 角 Step Angle	1.8°
3. 额定电压 Rated Voltage	DC 2.1V
4. 额定电流 Rated current	DC 3.0A
5. 保持转矩 Holding Torque	≥ 1900mN.m
6. 相电阻 Winding resistance	0.7±15% ohm(20℃)
7. 相电感 Winding inductaoce	2.0±20% mH (1kHz)
8. 转向(轴伸向看) Directlon of rotation	A-AB-B-CW
9. 转动惯量 Rotor Inertia	230 g.cm ²
10. 电机重量 Weight	1.1Kg
11. 绝缘等级 Insulation class	B Class



输出孔



输入孔

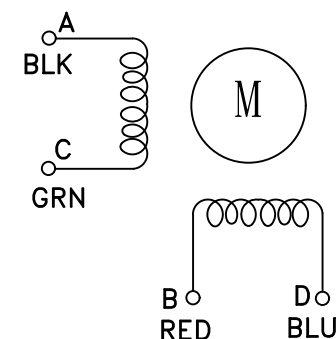
Ø9深20—键3*3*14

減速比:

5 / 7.5 / 10 / 15 / 20 / 25 /
30 / 40 / 50 / 60 / 80 / 100

电气原理图

winding drawing



UMot

视图
view

比例
inverse
proportion

A0

重庆优摩特科技有限公司
Chongqing UMot technology Co.Ltd.

型号 Model	57HS7407-95TS-JM2-500
-------------	-----------------------